

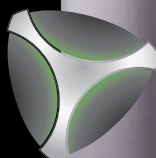


**HOLOPHANE**<sup>®</sup>

An **AcuityBrands** Company



**DENVER**<sup>™</sup>  
elite system



**bollard**

**denver**<sup>™</sup> elite bollard

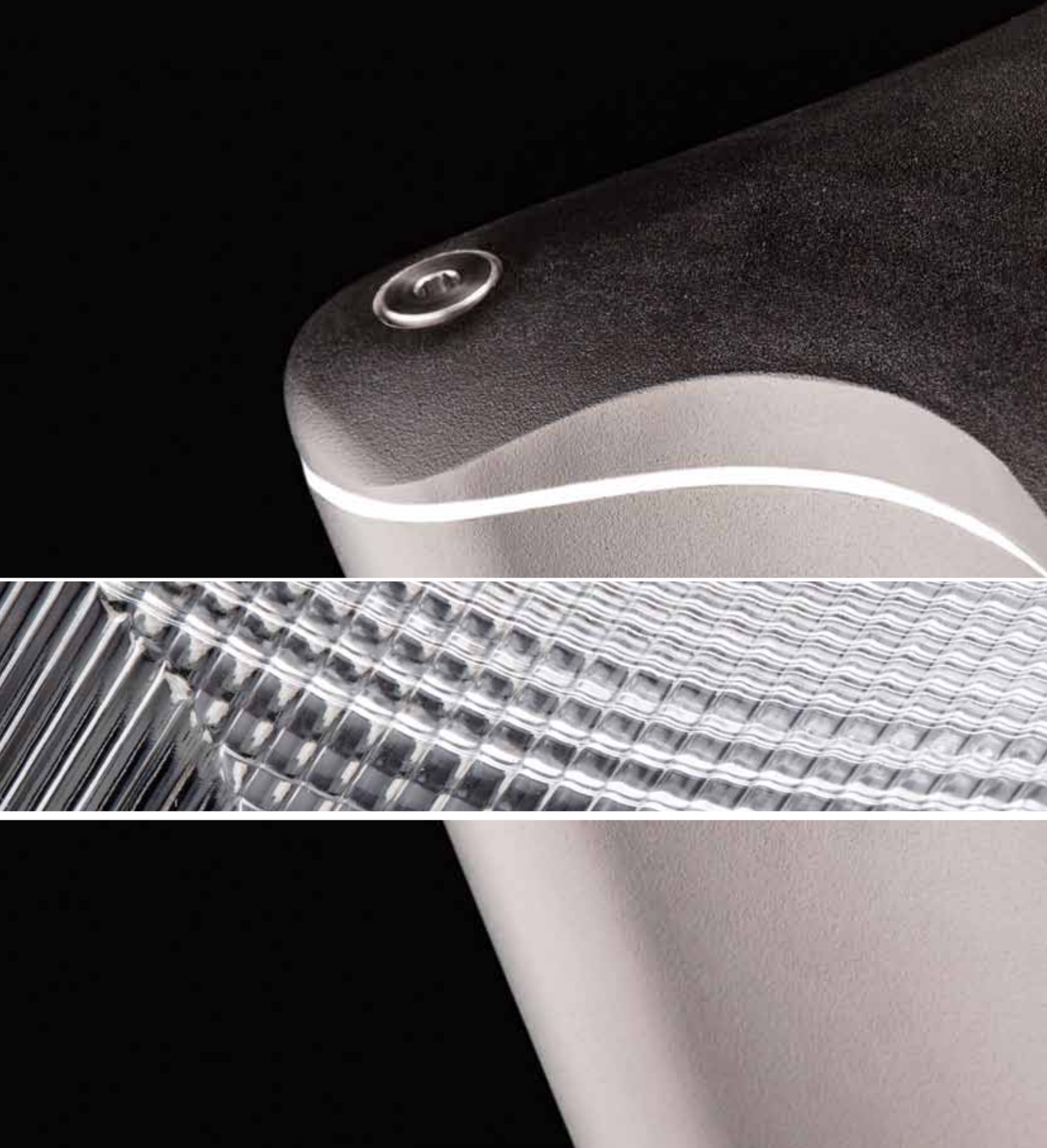
Patent Pending  
REGISTERED EUROPEAN DESIGN



DENVER™  
elite system

---

bollard





**bollard**  
denver™ elite

DENVER™  
elite system  
bollard



REGISTERED EUROPEAN DESIGN





Patent Pending

The **Denver™ Elite bollard** combines a palette of design variables, which include aesthetic appeal, quality, durability and performance.

The Denver™ Elite bollard is a modern aesthetic design that incorporate LEDs in addition to standard white light sources. Despite its stylised design the prismatic optical performance of the bollard is still industry leading offering a choice of distributions. The trilobe design profile with patent pending decorative light line membrane is a progression of everything we've learnt from our existing bollard whilst taking new technologies and environmental issues into consideration. Denver™ Elite Bollard is offered with electronic gear only (to help you reduce your energy costs) and the latest LED technology - offering a contemporary or conventional light source that doesn't compromise its optical performance.



The product has been designed to incorporate a heat barrier that enables a 'cool to touch' feature and ensures that the product adheres to BS EN ISO 13732-1. The membrane is mounted within the cap itself ensuring that it meets the 'cool to touch' standard at all times. In addition the barrier allows us to create a unique 'light line'. Giving you a safe and stylised product in one.



## specification

The luminaire shall consist of an extruded aluminium body, housing integral control gear for a LED's, metal halide, compact fluorescent and COSMO lamps. The optical arrangement shall consist of a prismatic lens or prismatic lens with louvre. The top tri-lobe gasket enabling the bollard to achieve EN60598-1 (patent pending) is secured between the top cap and body via three stainless steel nuts. Root mounted option available. The luminaire complies to EN60598 with a range of options and accessories.

## lamp types

45w-60w Cosmo

35w-70w HID

26w-42w PL4

11 x 1.3W Luxeon LEDs

## approvals

- > BS EN60598-1
- > BS EN55015
- > BS EN61000-3-2
- > BS EN61000-3-3
- > BS ENISO13732
- > BS EN62031
- > BS EN62384
- > BS EN62560

## ip rating

IP659



single lens



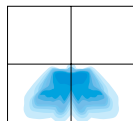
double lens



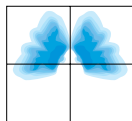
triple lens

## light distribution

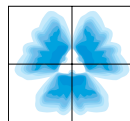
Symmetric single lens



Bisymmetric double lens



Symmetric triple lens



## features and benefits

### Contemporary styling

- > Unique 'registered' tri-lobe design giving an aesthetic appeal that complements today's modern architecture

### High Quality Construction

- > Durable and robust design via three securing rods and nuts
- > Fully weather sealed

### Single, Double or Triple lens

- > Unique lens layout that is suitable for a wide range of applications

### Louvre with Prismatic Lens

- > Gives the bollard additional upright cut-off. A first in any bollard

### Decorative 'Patent Pending' Light Line

- > Gives the product a unique style
- > Cool to touch. Product complies to BS ENISO 13732-1

### Available in 2 heights

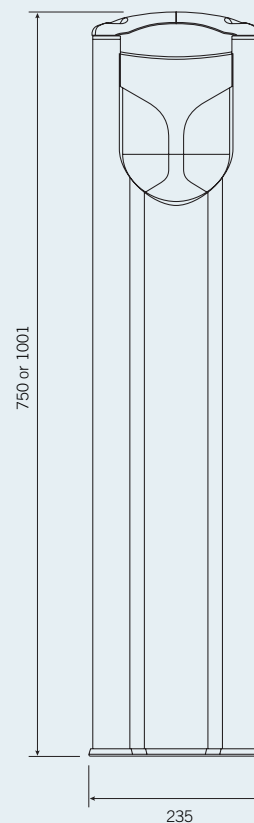
- > Flexibility
- > Different visual effects

### Vandal resistant

- > Robust styling and build process.
- > Patented tri-lobe design enables stability



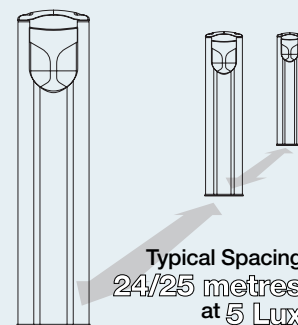
dimensions in mm



## weight & thermal data (1m / 0.75m version)

Lamp Type	Weight (kg)	Min. Operating Temperature (°C)	Max. Ambient Temperature (°C)	Temp of Top (°C)
35CDMTF3	10 / 8.5	-20	40 / 35	43.8 / 53.4
70CDMT3	10 / 8.5	-20	35 / 35	43.8 / 53.4
26PL4	10 / 8.5	-5	40 / 35	43.8 / 53.4
32PL4	10 / 8.5	-10	40 / 35	43.8 / 53.4
42PL4	10* / 8.5*	-10	40 / 35	43.8 / 53.4
45CW	10 / 8.5	-20	40 / 35	43.8 / 53.4
60CW	10 / 8.5	-20	40 / 35	43.8 / 53.4
11LED	10.5 / 9	TBC	TBC / TBC	TBC / TBC

\*allow 0.5kg for .EM = emergency version on compact fluorescent lamp types



## ordering details

To find out more  
please visit  
[www.holophane.co.uk](http://www.holophane.co.uk)

### Code

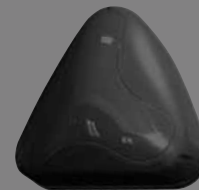
DEB	Denver Elite Bollard						
	<b>Code</b>	<b>Lamp Type</b> (required)					
	.35CDMTF3	35W Clear CDM-T 3000°K Ceramic Metal Halide lamp (G12 base)					
	.70CDMTF3	70W Clear CDM-T 3000°K Metal Halide Lamp (G12 base)					
	.26PL4	26W 4000°K Compact Fluorescent 4 Pin lamp (G24q-3 base)					
	.32PL4	32W Triple Tube 4000°K Compact Fluorescent 4 Pin lamp (GX24q-3 base)					
	.42PL4	42W Triple Tube 4000°K Compact Fluorescent 4 Pin lamp (GX24q-4 base)					
	.45CW	45W CosmoWhite Lamp (PGZ 12 base)					
	.60CW	60W CosmoWhite lamp (PGZ12 base)					
	.11LED	11 x 1.3W Rebel LED, 3500°K-4500°K					
	<b>Code</b>	<b>Distribution</b>					
	.LYA	Louvre Asymmetric Distribution (not available with .11LED)					
	.PAY	Asymmetrical Distribution					
	<b>Code</b>	<b>Enclosure</b>					
	.SU	Single Sided Asymmetric Distribution					
	.DO	Double Sided Bisymmetric Distribution					
	.TR	Triple Sided Symmetric Distribution					
	<b>Code</b>	<b>Head / Height</b>					
	.H75	750mm High					
	.H100	1000mm High					
	<b>Code</b>	<b>Colour</b> (required)					
	.C1	Smooth White (RAL 9016)					
	.C4	Textured Graphite (RAL 7011)					
	.C6	Smooth Grey (RAL 7035)					
	.C7	Black (RAL 9005)					
	.C9	Metallic Silver (RAL 9006)					
	.RAL****	RAL Colour (customer choice)					
	<b>Code</b>	<b>Options</b>					
	.C	Enhanced Paint Finish					
	.ME1	Complete with 3 hour maintained emergency battery and inverter (only available with PL4 lamps)					
	.TW	Through wiring option					
	.MCB	Mini circuit breaker					
	.LL	Less lamp (not available with CW lamps)					

**Example** DEB .26PL4 .LYA .DO .H75 .C4 .C

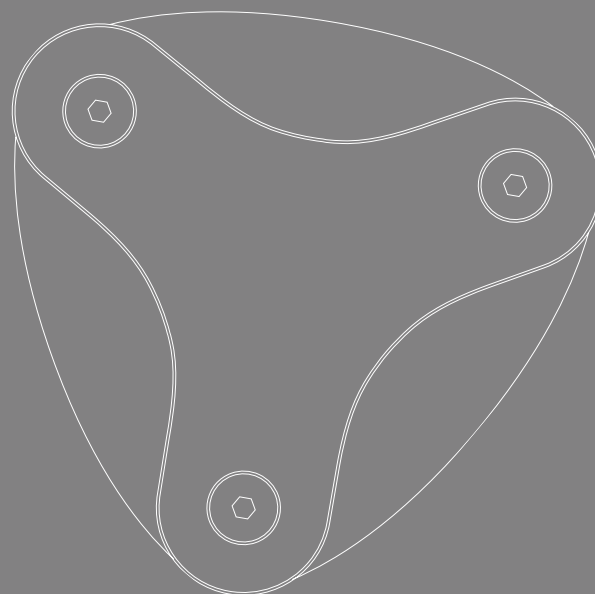
## luminaire accessories

### Code

<b>DBL.FT</b>	Set of 3 Bolts M10 x 100mm for Flange Base Fixing
<b>DEB.ROOT</b>	Root Mounting Spike to fit Flange Base Denver Bollard



denver™ elite range  
available end 2010



DENVER™  
elite system



**bollard**

Holophane Europe Limited  
Bond Avenue, Bletchley, Milton Keynes MK1 1JG United Kingdom  
Telephone: +44 ( 0 ) 1908 649292 UK Fax: +44 ( 0 ) 1908 367618  
International Fax: +44 ( 0 ) 1908 272029  
E-mail: [info@holophane.co.uk](mailto:info@holophane.co.uk)

[www.holophane.co.uk](http://www.holophane.co.uk)

  
**HOLOPHANE®**  
An *Acuity* Brands Company