

prismashield™

applications

Underpasses	Secure units
Corridors	Hospitals
Car parks	Prisons (circulation areas only)
Stairwells	Detention centres
Stations	Indoor sports applications
Under canopy areas	

Designed to withstand severe physical attack and exposure to weather, Prismashield has an ultra-slim profile robust surface-mount luminaire that can withstand impact energy of up to 50 joules minimum. The polycarbonate diffuser with internal prisms produces a precise symmetric or asymmetric light distribution for even, glare-free illumination that helps people feel safe and more secure in arduous environments. Two mounting options - surface and cornice mounting - an integral maintained emergency option and optional anti-graffiti coating make Prismashield a versatile lighting solution for areas that require extra security.



features and benefits

Robust modular construction

- > Suitable for areas prone to vandalism

Suitable for surface or cornice mounting

- > Versatile mounting locations

Through-wiring facility

- > Suitable for mounting end to end in continuous runs

Infill panel accessories

- > Continuous runs with same profile

Maintained emergency option

- > Maintained lighting through power cuts

Anti-graffiti coating (optional)

- > Prevents vandalism & reduces cleaning cost

IP659

- > Fully weatherproof with high impact resistance

lamp types included

- 2 x 24W T5 fluorescent
- 2 x 28W T5 fluorescent
- 2 x 39W T5 fluorescent
- 2 x 49W T5 fluorescent
- 2 x 54W T5 fluorescent

IP rating

IP659 

IK10 ++50 joules* (unless vandal coated)

approvals

Complies with EN60598

CE



Cornice-mount version



Surface-mount version

Problems with conventional fittings

Broken toggles

The lens of anti-corrosive fittings is usually fastened to the luminaire body by a number of plastic toggles, which are prone to breaking with extended usage. Moreover, this fixing method makes it easy for vandals to get into the luminaire. The Prismashield optic on the other hand is fixed to the luminaire body via six tamper-proof socket head M4 screws, securing the integrity of the fitting without fear of breakage and keeping vandals at bay.

Compromised IP rating

Broken toggles and inferior materials often mean that the stated IP rating of a typical anti-corrosive fitting cannot be guaranteed over time. Dirt and moisture will accumulate in the luminaire, compromising efficiency and eventually leading to failure. Prismashield's 3mm thick polycarbonate diffuser is securely fastened to the luminaire body via six tamper-proof socket head M4 screws, with the end caps bonded to the lens. This high quality construction guarantees an IP rating of 659 over time.

Graffiti

A major problem today is graffiti being sprayed onto luminaires, thus obscuring the lens and compromising light output, sometimes obliterating it altogether. To counteract this, Prismashield has the option of an anti-graffiti coating for the lens, which makes it easy to wipe off any graffiti without scratching or otherwise damaging the lens.



Toggles



Compromised IP rating



Graffiti

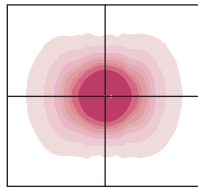


specification

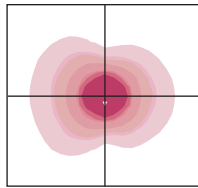
The luminaire shall consist of an extruded and painted aluminium body with injection-moulded polycarbonate end caps housing the gear tray assembly and 2xT5 fluorescent lamps in a choice of wattages. The maximum depth when surface-mounted shall be less than 100mm and the maximum visible surface when cornice-mounted shall be 180mm. The optic shall consist of a 3mm thick clear polycarbonate diffuser lens with prisms on the internal face. The end caps are bonded to the lens. The diffuser lens assembly is fixed by two to the luminaire via six tamper-proof socket head M4 screws. An IP rating of 659 shall be achieved with a die-cut gasket, the impact resistance of the luminaire being a minimum of 50 joules. The luminaire shall be suitable for surface or cornice-mounting with the ability to through-wire for continuous run mounting and complies with EN60598.

light distributions

Symmetric (.SY)



Asymmetric (.AY)



Photometric data is available at www.holophane.co.uk



Surface continuous run



Infill panels

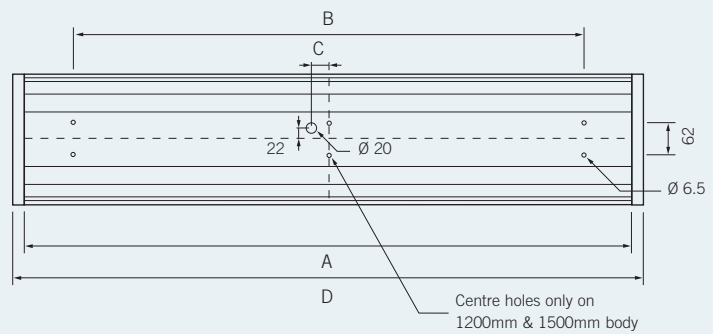
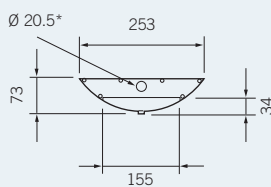
weights & thermal data

Lamp Type	Mounting	Weight (kg)	Operating Temperature (°C)	
			Minimum	Maximum
2 x 24W T5	Surface	3.8	0	40
2 x 24W T5	Cornice	3.2	0	40
2 x 28W T5	Surface	6.6	0	40
2 x 28W T5	Cornice	5.6	0	40
2 x 39W T5	Surface	5.5	0	30
2 x 39W T5	Cornice	4.3	0	30
2 x 49W T5	Surface	8.7*	0	40**
2 x 49W T5	Cornice	7.0*	0	40**
2 x 54W T5	Surface	6.6	0	20**
2 x 54W T5	Cornice	5.6	0	20**

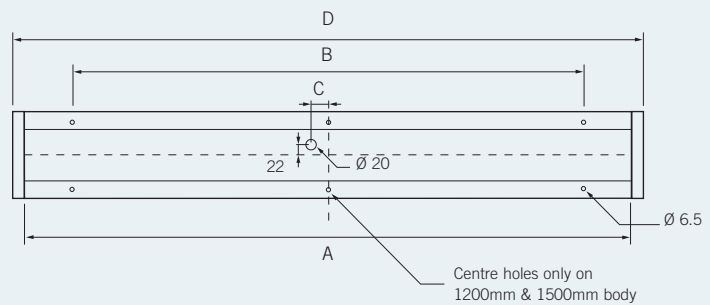
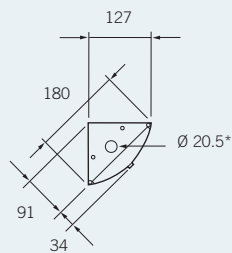
* For .ME Maintained Emergency option add 0.4kg. ** Only suitable for environments with a maximum ambient temperature of 20°C.



Surface-mount



Cornice-mount



for surface-mount and cornice-mount options

Lamp Type	Nominal Length (mm)	A	B	C	D
2 x 24W T5	600	590	400	0	625
2 x 39W T5	900	890	700	0	925
2 x 28W/54W T5	1200	1190	1000	35	1225
2 x 49W T5	1500	1490	1300	35	1525



ordering details : luminaire

Code

PSD	Prismashield Anti-Vandal Prismatic Fluorescent Luminaire				
	Code	Lamp Type			
	.224T5	2 x 24W HO T5 fluorescent tubes 3000K			
	.228T5	2 x 28W HE T5 fluorescent tubes 3000K			
	.239T5	2 x 39W HO T5 fluorescent tubes 3000K			
	.249T5	2 x 49W HO T5 fluorescent tubes 3000K			
	.254T5	2 x 54W HO T5 fluorescent tubes 3000K			
		Code	Light Distribution		
		.SY	Symmetric		
		.AY	Asymmetric		
			Code	Mounting	
			.SM	Surface-Mounted	
			.CM	Cornice-Mounted	
			Code	Options	
			.ME	Integral 3 hour maintained emergency option*	
			.AG	Anti-Graffiti coating on prismatic lens	
Example	PSD	.254T5	.SY	.SM	.AG

Note: Luminaires are supplied as standard with HF electronic control gear for use on 220/240V 50Hz supply and complete with lamp * Only available in 49W lamp types.

Prismashield infill panels for continuous runs

Surface mounted

PSD.600SM.INFILL	600mm infill panel
PSD.900SM.INFILL	900mm infill panel
PSD.1200SM.INFILL	1200mm infill panel
PSD.1500SM.INFILL	1500mm infill panel

Cornice mounted

PSD.600CM.INFILL	600mm infill panel
PSD.900CM.INFILL	900mm infill panel
PSD.1200CM.INFILL	1200mm infill panel
PSD.1500CM.INFILL	1500mm infill panel





mk
one

BURTON

DOROTHY
PERKINS



118