



**HOLOPHANE®**



# Floodlighting for sports and community environments

Controlled, reliable lighting for versatile outdoor spaces





# Floodlighting built on experience

Holophane has a long and established history in exterior lighting, supporting environments where reliability, control, and long-term performance are essential.

Floodlighting is a natural extension of this expertise. It requires more than meeting target light levels. It demands an understanding of how light is distributed across outdoor spaces, how it affects users and surroundings, and how systems perform over time.

Our approach is design-led and application-focused. We support floodlighting projects with practical guidance, appropriate product selection, and a clear focus on delivering solutions that work reliably in real-world community settings.

This experience underpins our ability to support sports and community floodlighting applications with confidence.

# Floodlighting for multi-use games areas (MUGAs) and community sports environments



Multi-use games areas (MUGAs) and community sports facilities are often located in shared, sensitive settings. These projects must balance performance with planning considerations, community impact, and cost constraints.

In these environments, floodlighting decisions are shaped by:

- Control glare and maintain visual comfort
- Limit light spill beyond the site boundary
- Achieve even illumination across multi-use surfaces
- Ensure reliable operation with manageable maintenance



Lighting that is better for people, better for places and better for the planet.

## Our recommended floodlighting solutions

For MUGA and community sports applications, Holophane offers a focused, repeatable floodlighting solution that meets these requirements.



### Polar

**Precision lighting for smaller and lower-mounted installations**

The POLAR range is designed for community-scale applications, including MUGAs, school courts and recreational spaces. Its compact form and controlled optical performance make it ideal for lower mounting heights where accuracy and visual comfort are critical.

**Key product highlights:**

- 30W to 300W
- DALI control options
- Integral driver for simplified installation
- IK08 / IP66 rated
- Select versions available on short lead times



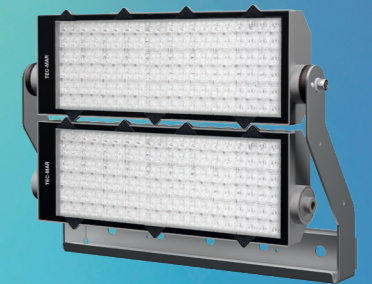
### Magic

**Reliable mid-range performance for versatile sports lighting**

Magic provides a robust and flexible solution for mid-sized sports areas, delivering consistent illumination with enhanced protection and remote driver capability for improved maintenance access.

**Key product highlights:**

- 300W to 600W
- 10kV surge protection
- Remote driver configuration
- IP66 / IK08 rated



### Galaxy

**High-performance floodlighting for large-scale and competitive environments**

Galaxy is engineered for larger MUGAs and performance-driven applications, offering powerful output, advanced control options and scalable configurations to meet higher lighting class requirements.

**Key product highlights:**

- 300W to 1620W
- 10kV surge protection
- D4i and DMX control options available
- Remote driver configuration
- IP66 / IK08 rated

Together, these ranges provide a clear starting point for most of the community and MUGA floodlighting projects.



## Designed for control, reliability and long-term value

Effective floodlighting is not defined by output alone. Long-term success depends on how well light is controlled, how consistently systems operate, and how easily installations can be maintained.

Holophane floodlighting solutions are selected and configured to support controlled light distribution, flexibility across different site layouts, robust outdoor performance, and reliable operation over the life of the installation.

This approach helps ensure floodlighting solutions remain effective, acceptable, and practical to operate over time.

## Supporting a range of community floodlighting applications

In addition to multi-use games areas, Holophane supports floodlighting across a range of community and recreational outdoor environments.

By applying the same design-led principles of control, reliability, and appropriate performance, we help ensure floodlighting solutions are suited to their setting, aligned with local expectations, and practical to deliver and maintain.

Our role is to help identify the right approach for each site, based on its specific needs and constraints.



*Discuss your lighting challenges with our team.*

# Why work with Holophane?

---

Holophane brings together lighting expertise, a focused floodlighting range, and practical project support to help deliver successful community lighting outcomes.


- 130 years of experience in exterior and sports lighting.
- Application-focused, design-led approach.
- Clear, repeatable solutions for community sport.
- Support from concept through to delivery.
- Focus on long-term reliability and value.




## Let's talk about your floodlighting project

---

Every site is different. By engaging early, we can help identify the most appropriate floodlighting solution for your environment, requirements, and long-term goals.



 Holophane Europe Ltd.  
Bond Avenue, Bletchley,  
Milton Keynes, Bucks, MK1 1JG

 01908 649292  
 [info@holophane.co.uk](mailto:info@holophane.co.uk)  
 [holophane.co.uk](http://holophane.co.uk)